

Feature Article in ‘Western Morning News’

Thursday, 17 November 2011.

Back on the market at a time when fuel saving is paramount.

Breaking-open the GM32 mould at Cygnus Marine Boats (Cornwall) Ltd from which Boscastle Fishing Company’s new craft was lifted on Monday (14 November).

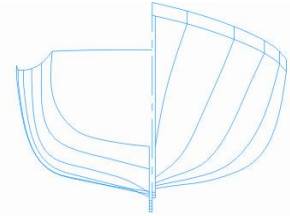
Proven to be a classic design, built in GRP and conceived in 1974 the Cygnus Marine GM32 remains the most economic under-10m displacement fishing boat available in the UK, claims the manufacturer, Cygnus Marine Boats (Cornwall) Ltd.

Having recently obtained the mould, the firm is busy fitting out its first GM32, a part-complete order for Boscastle Fishing Company Ltd, a nearby business led by Dan Clague.

Having a traditionally streamlined hull rather than the bulky lines of other under-10s, the GM32 has far less drag and as a result overturns the high fuel cost of today’s fishing industry,” said Henry Millington, a director of Cygnus Marine Boats (Cornwall) Ltd.

To provide greater carrying potential and make a ‘big’ craft from a relatively small boat, designer Gary Mitchell achieved his initial aims; and while the GM32 still has those attributes, its return to the new fishing boat market is spurred by it’s reduced overheads. Dan

CYGNUS MARINE BOATS



CYGNUS MARINE BOATS LTD HEAD OFFICE 4 BROOKSIDE IND EST, SAWTRY, CAMBS PE28 5SB, TEL: 01487 831941

Email: info@cygnusmarineboats.co.uk Web: www.cygnusmarineboats.co.uk

Clague explains: “We are not knocking other boats of that size, but many points make it the right boat for us. Firstly, Boscastle is a hard place to work from, we have a short tide-window and need a shallower draft boat, and the GM32 has just 1.22m of draft. Also, it has slightly lower freeboard than the bulky designs, giving less windage. To reduce that even further we will have a relatively small wheelhouse fitted, and for extra maneuverability in shallow water we are looking to have a bow thruster installed. Bulky boats are not suitable for our type of fishing. At a later date we may install a small vivier tank to hold live shellfish.”

Recently taken from the mould, Boscastle Fishing Company’s dark blue hull marks the 216th GM32 ever built. Most built in the 1970s remain in operation, several being “the very first ever built” and are still going strong, says Henry Millington. He added: “My special interest in the GM32 stems from having spent 11 years in a senior position in design work at the original Cygnus Marine.

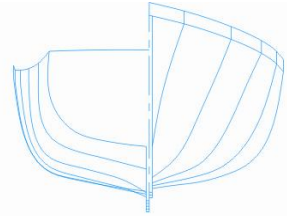
“Although the GM32 became the backbone of that firm several years before I joined the company, it was and remains a favourite of mine. Look at the GM32s that were built over the years, they are still going strong, some go through the hardest of work any boat of that size may face, day after day, and in my opinion each has the edge on other under-10m designs.

“Of the 216 GM32s built, some have been supplied to overseas orders, namely Burma, Sri Lanka, Iceland, Nigeria, Saudi Arabia, Sweden, Seychelles, Rwanda; and nearly every fishing port in the British Isles, either at some stage or still does house such a boat.

DIRECTORS: D. SIMPSON, H. MILLINGTON

Registered Address : Stephenson House, 15 Church Road, Peterborough, Cambs PE1 2TP

REGISTRATION No. 6578475 VAT No 935 3929 93



We have several potential orders under discussion.”

Considered by Dan Clague as “the last boat home”, he reflects on watching a GM32 return to Padstow in “dreadful weather”.

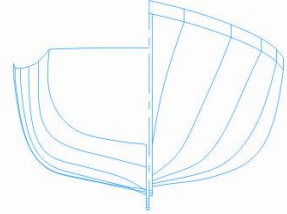
He told WMN: “Before placing the order we studied most of the displacement boats of that size now available and several factors influenced our choice. Sea keeping of the GM32 came clear when I saw such a boat coming back to Padstow, it was some way off and I couldn’t see the type of boat it was, and wondered why on Earth any one would want to be out in those conditions. Catamarans were back in the harbour hours before – it was a GM32 and to me that says it all.”

Being constructed as a part-complete kit with its hull built to Seafish specifications the final fit out work will take place at the boatyard of G. B. Smith and Son at Rock.

Henry Millington explained: “To be able to offer the GM32 back to the market is quite a scoop for us, many were bidding for the mould. We've already had a considerable amount of interest in the vessel and we invite any interested skippers to get in touch for them to see what the GM32 hull has to offer them. We have received interest from all over the United Kingdom, Ireland, Netherlands and France.

“We feel that the GM32's introduction to our range of displacement fishing vessels now covers all of the most popular size's required by today’s fishermen – the GM26, GM22, GM19 and GM16.”

CYGNUS MARINE BOATS



CYGNUS MARINE BOATS LTD HEAD OFFICE 4 BROOKSIDE IND EST, SAWTRY, CAMBS PE28 5SB, TEL: 01487 831941

Email: info@cygnusmarineboats.co.uk Web: www.cygnusmarineboats.co.uk

DIRECTORS: D. SIMPSON, H. MILLINGTON

Registered Address : Stephenson House, 15 Church Road, Peterborough, Cambs PE1 2TP

REGISTRATION No. 6578475 VAT No 935 3929 93
