



THE GM32

Multi-purpose coastal fishing vessel.



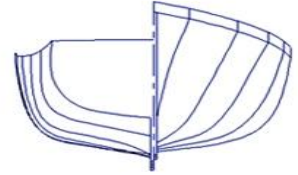
The GM32 is a sturdy multi-purpose coastal fishing vessel and workboat, suitable for single-handed working and all year round use.

It has proven to be a classic design and the recognised standard for coastal fishermen. Every craft is carefully constructed with the individual skippers' needs, style of fishing and working methods in mind. The GM32 can be built to the requirements of most classifications.

The hull is easily driven, needing only relatively low power to achieve an economical performance. The vessel has a modern round bilge and a heavy displacement design which provides excellent stability characteristics. It also has good cargo carrying capabilities and a spacious deck working area.

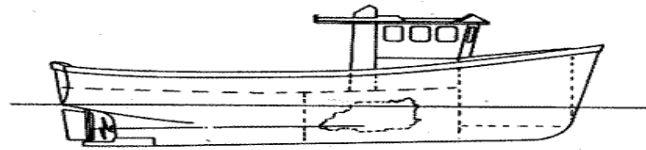
Kits can be supplied to any stage of construction; the boat being ideal for home completion, from a bare hull shell with free owners' choice of colour pigment, partly fitted out to the required standard, or fully finished boat.

CYGNUS MARINE BOATS

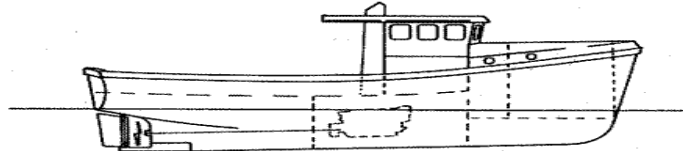


Specification

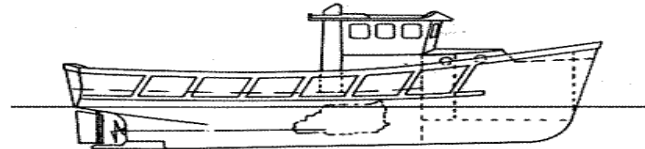
Length Moulded	9.9m 32' -6"
Beam	3.66m 12'
Draught	1.22m 4'
Displacement	10tons
Power required	100 to 155hp
Propeller (standard)	0.76m 30"
Construction	Seafish approved GRP



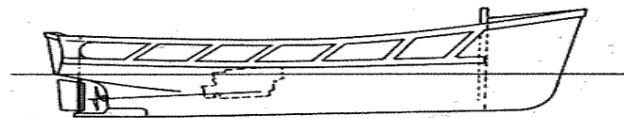
Forward wheelhouse



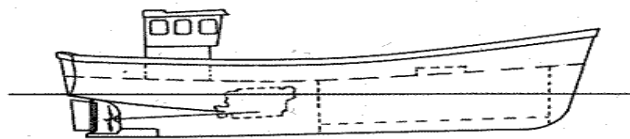
Whaleback design



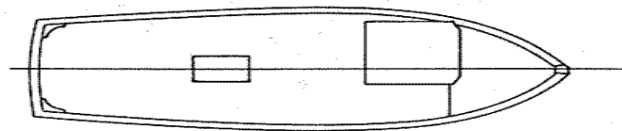
Pilot workboat



Open workboat



After wheelhouse



Forward offset wheelhouse

Cygnus Marine Boats Ltd
Unit 4 Brookside Industrial Estate,
Sawtry, Cambridgeshire, PE28 5SB

01487 831941

www.cygnusmarineboats.co.uk